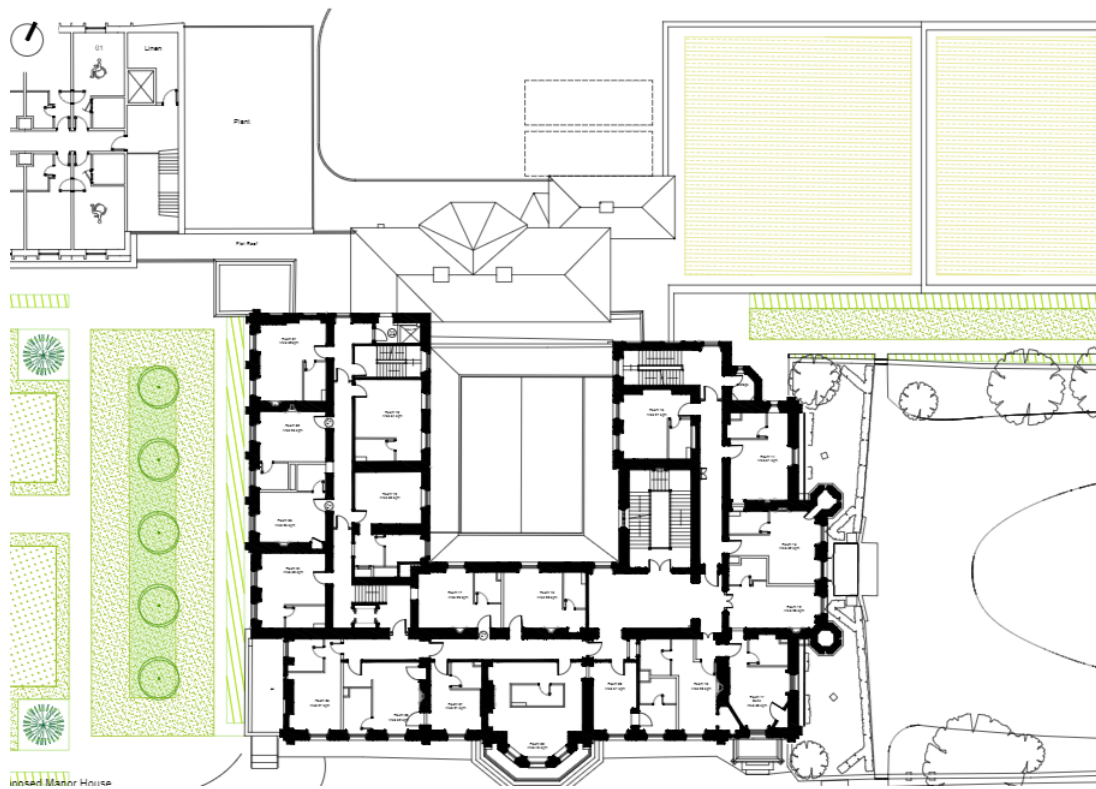
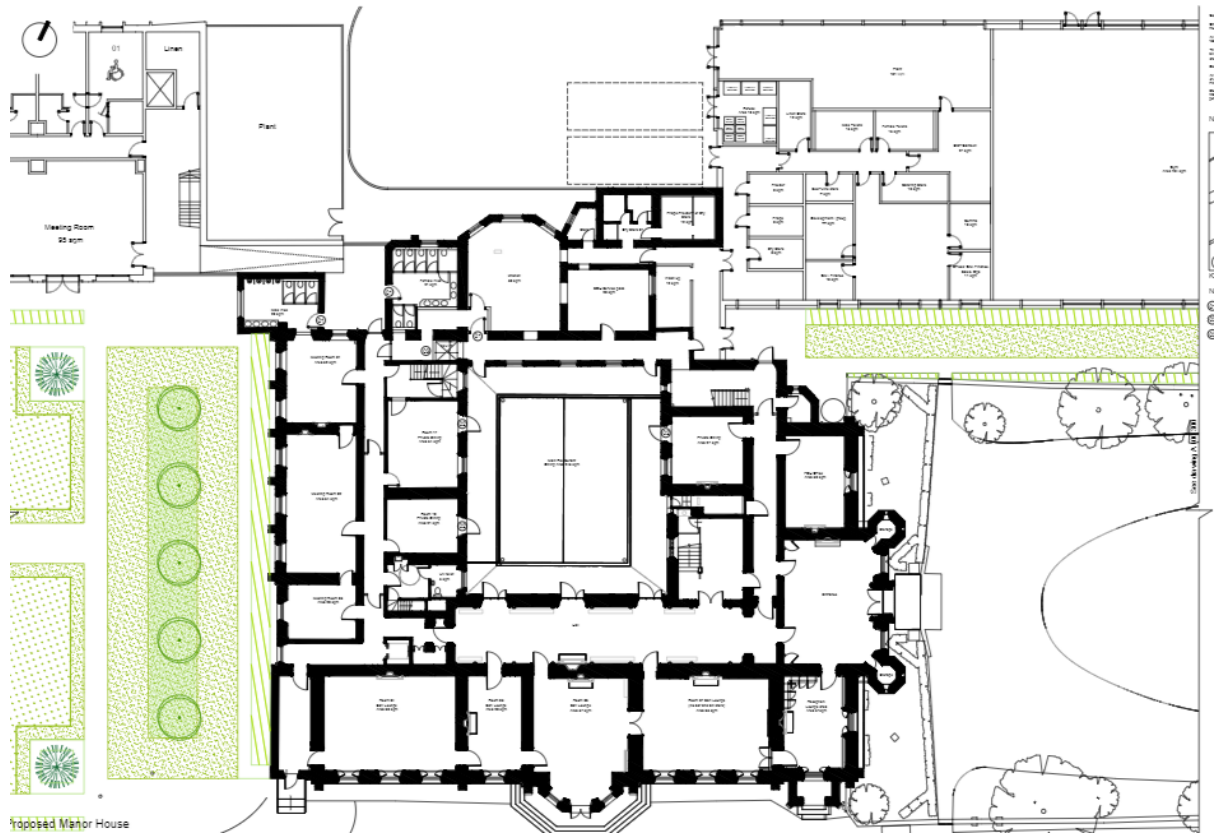
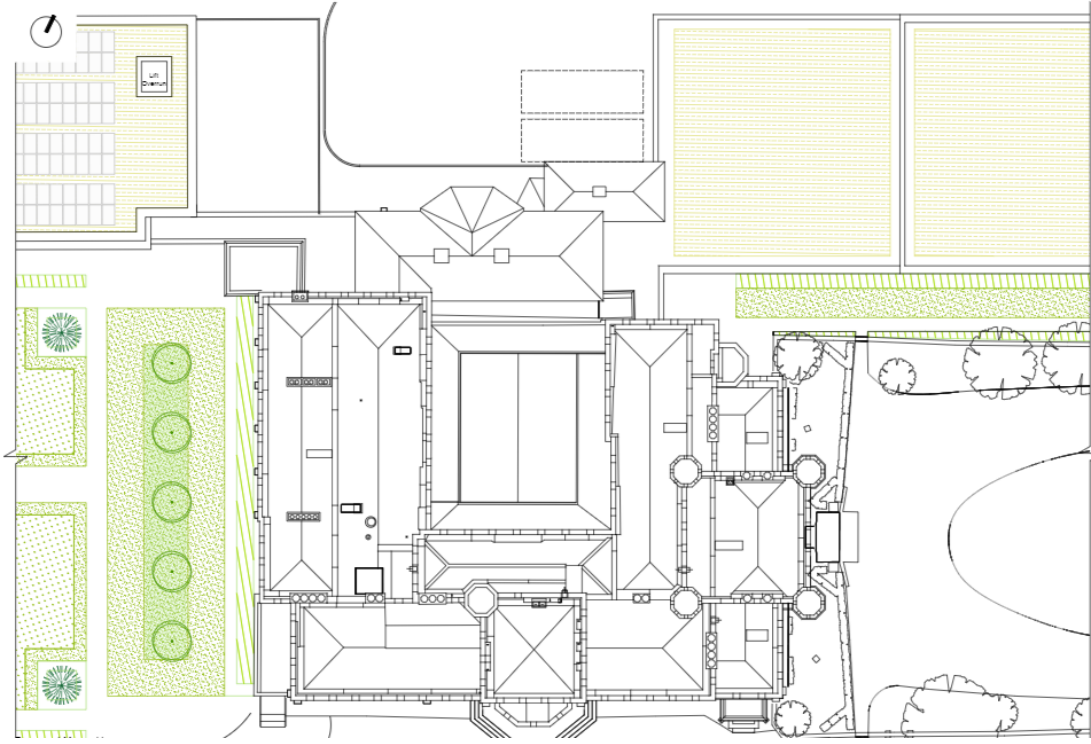


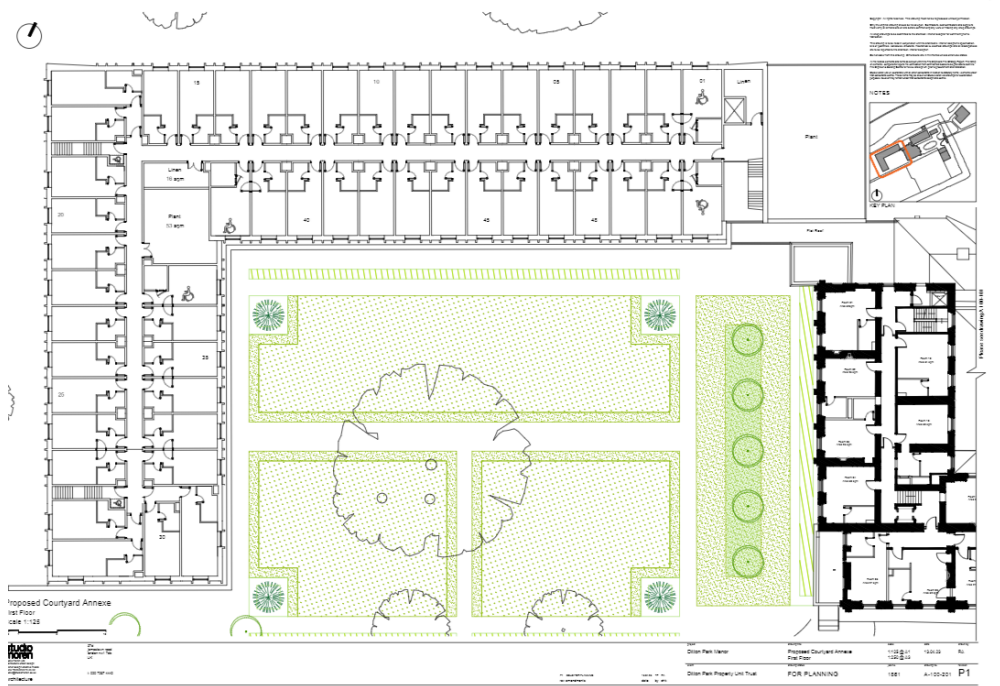
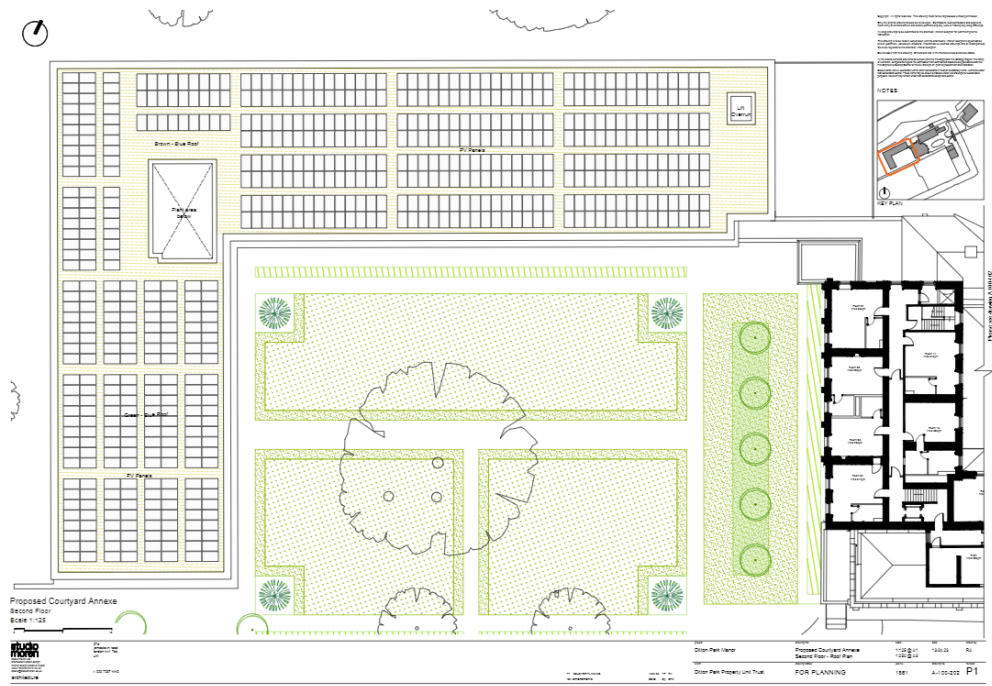
Appendix B – Plan and Elevation Drawings

Manor House

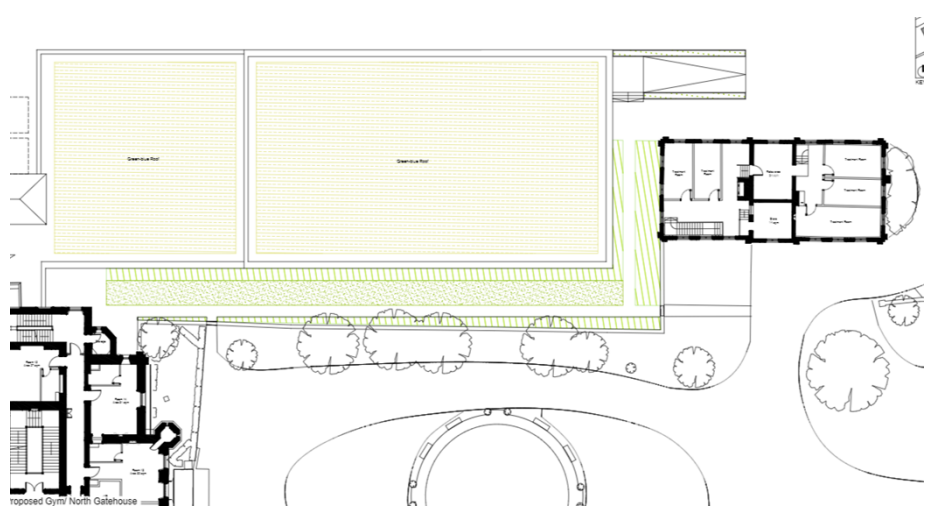
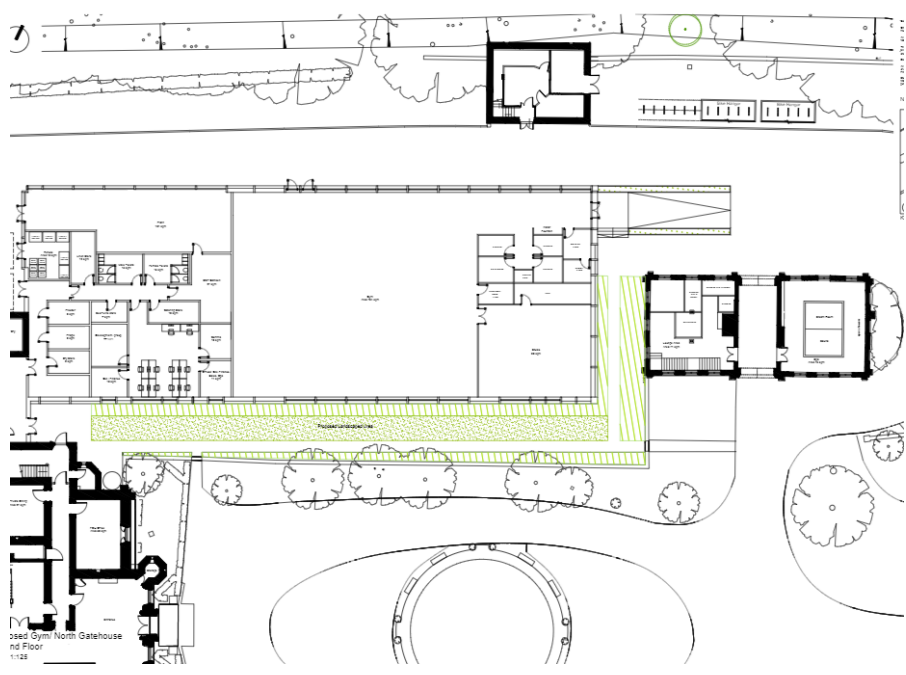




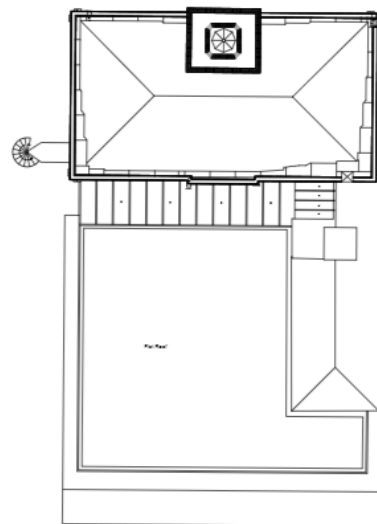
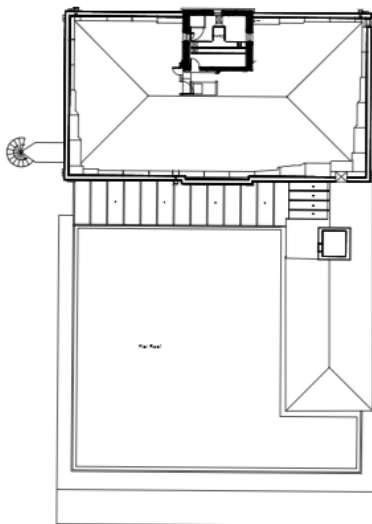
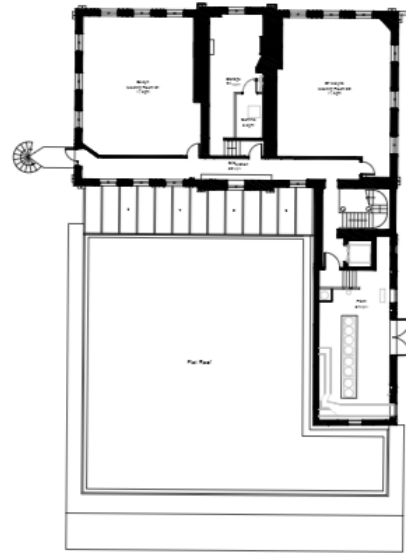
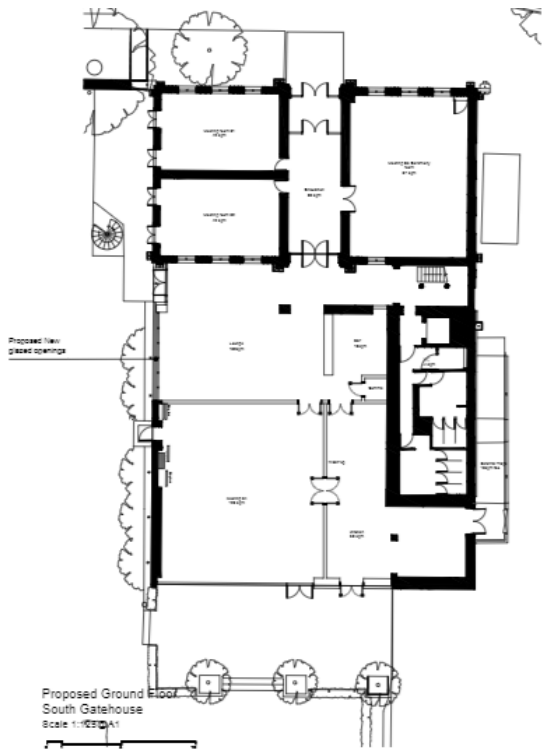
Proposed Courtyard Annex



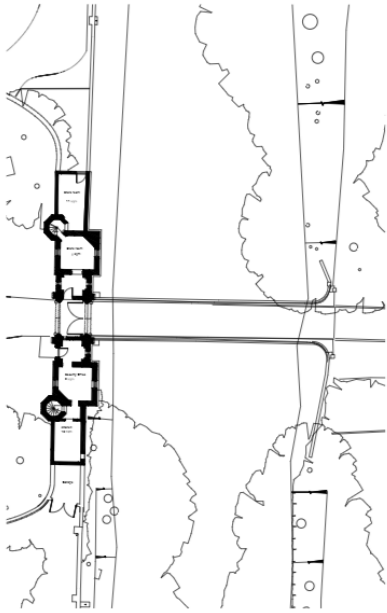
Proposed Gym / North Gatehouse



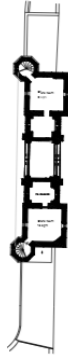
Proposed South Gatehouse



Proposed East Gatehouse



Proposed East Gatehouse
Ground Floor
Scale 1:125

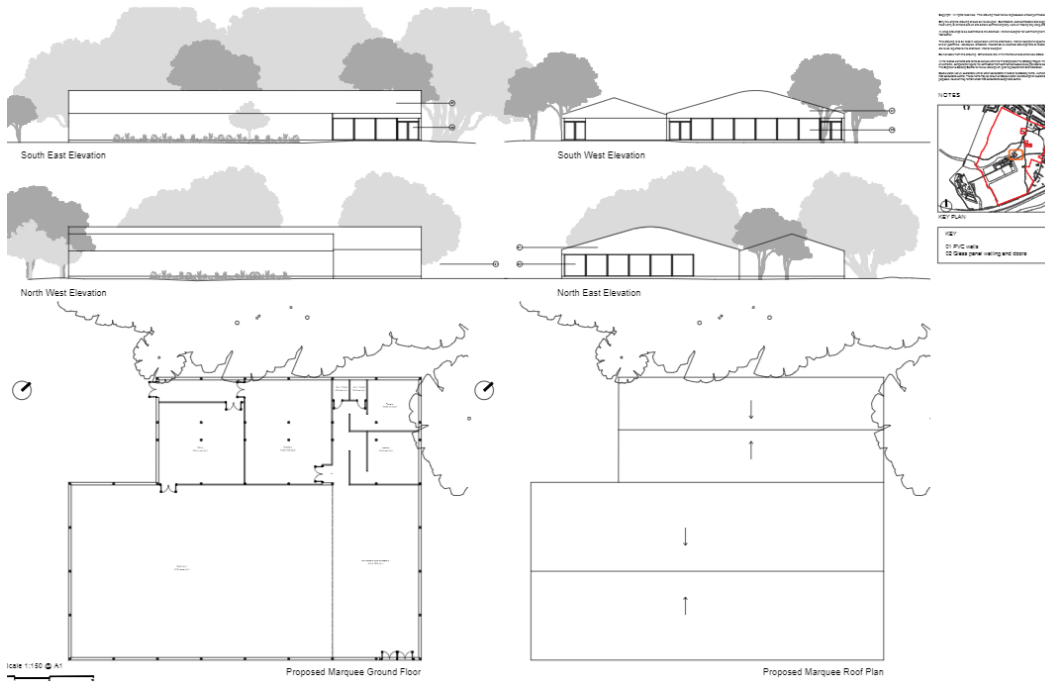


Proposed East Gatehouse
First Floor

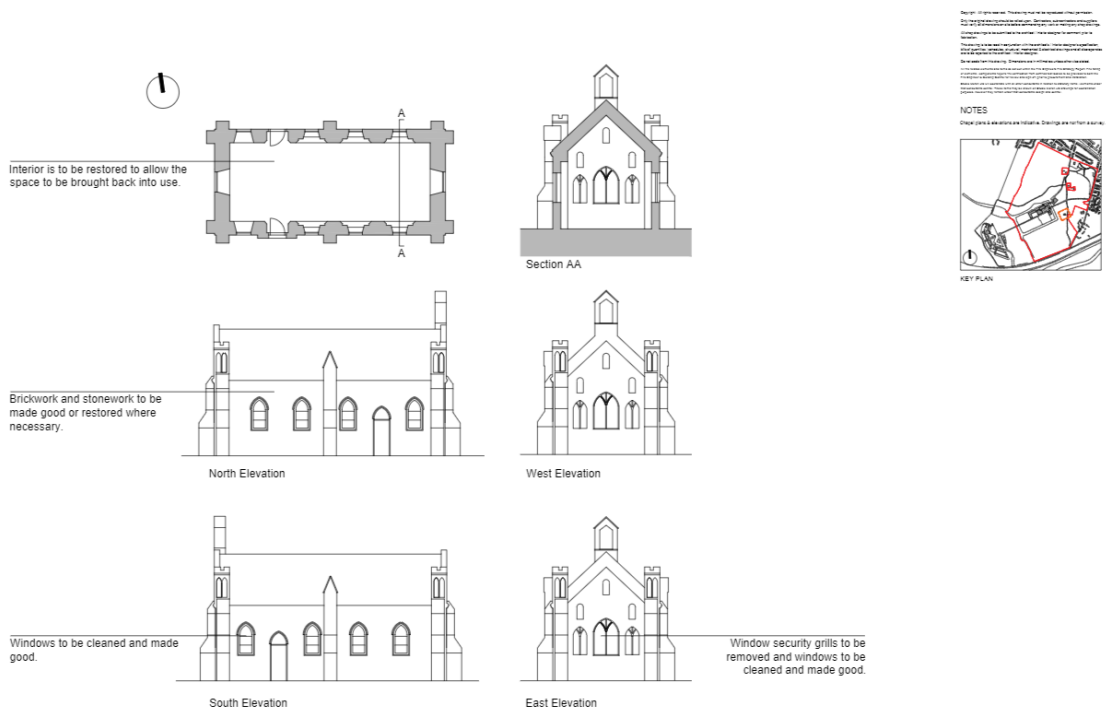


Proposed East Gatehouse
Roof Plan

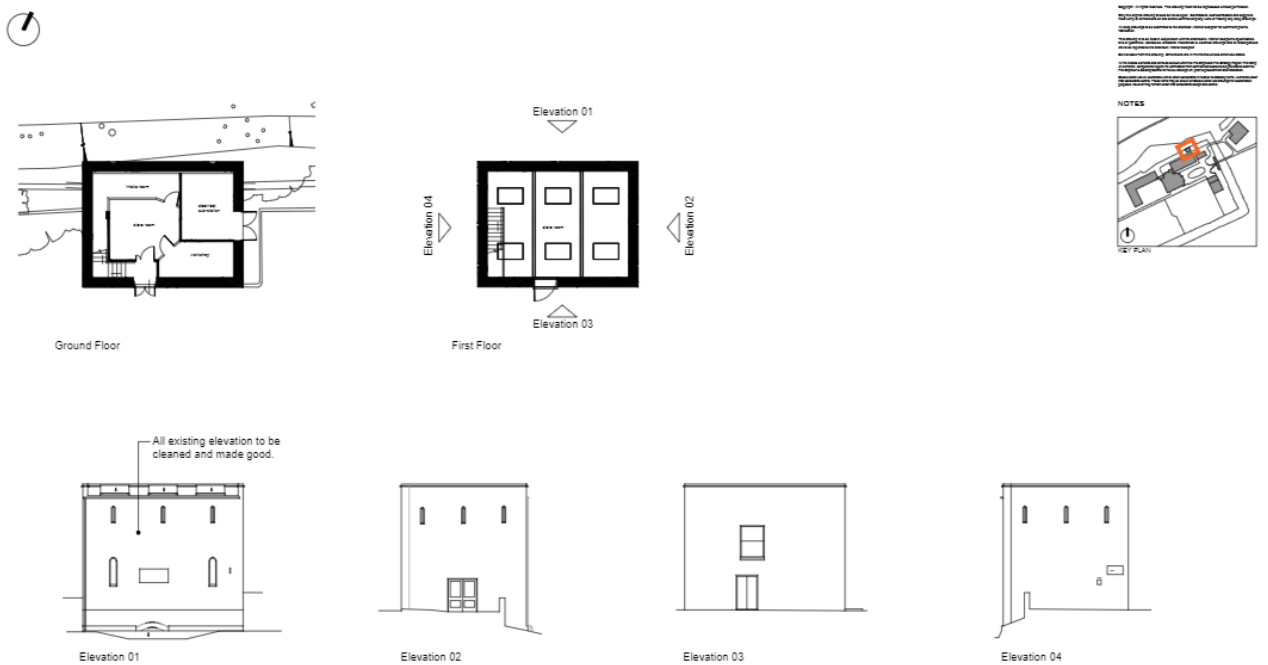
Proposed Marquee



Proposed Chapel



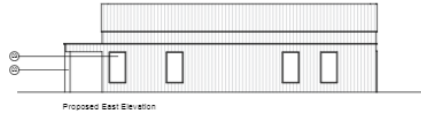
Proposed Granary



Proposed Community Building



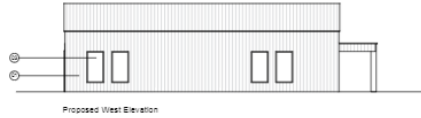
Proposed North Elevation



Proposed East Elevation



Proposed South Elevation



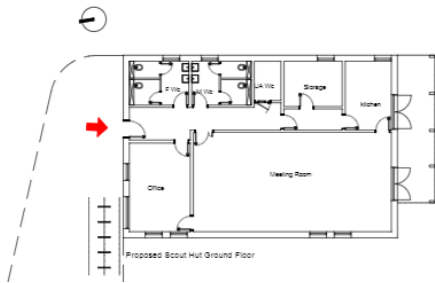
Proposed West Elevation

NOTES

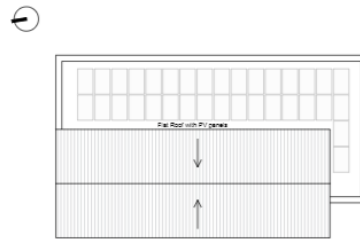


KEY

- 01 Timber cladding
- 02 Timber frame
- 03 Aluminum window
- 04 Aluminum door



Proposed Scout Hut Ground Floor



Proposed Scout Hut Roof plan



Proposed Scout Hut
Site Plan
Scale 1:200

NOTES



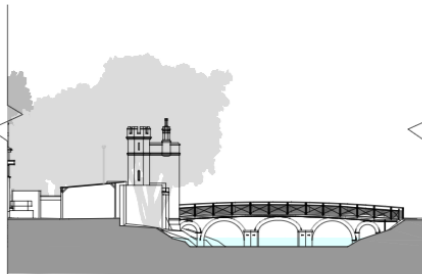
Sections



01 Moat - Section DD
1:300



02 Moat - Section EE
1:300

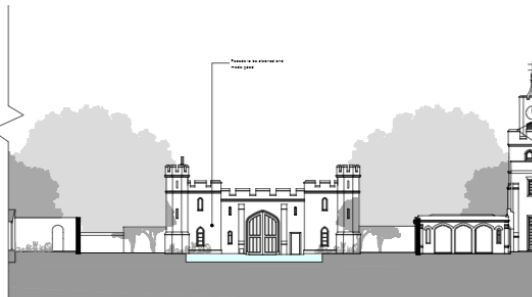


01. Proposed South Elevation
East Gatehouse

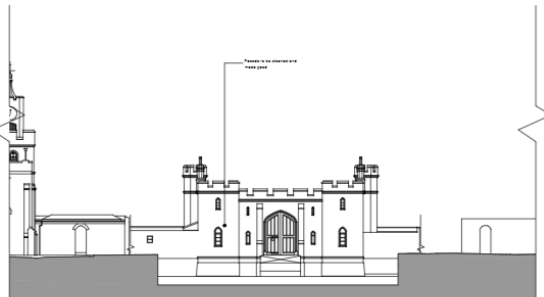


02. Proposed North Elevation
East Gatehouse

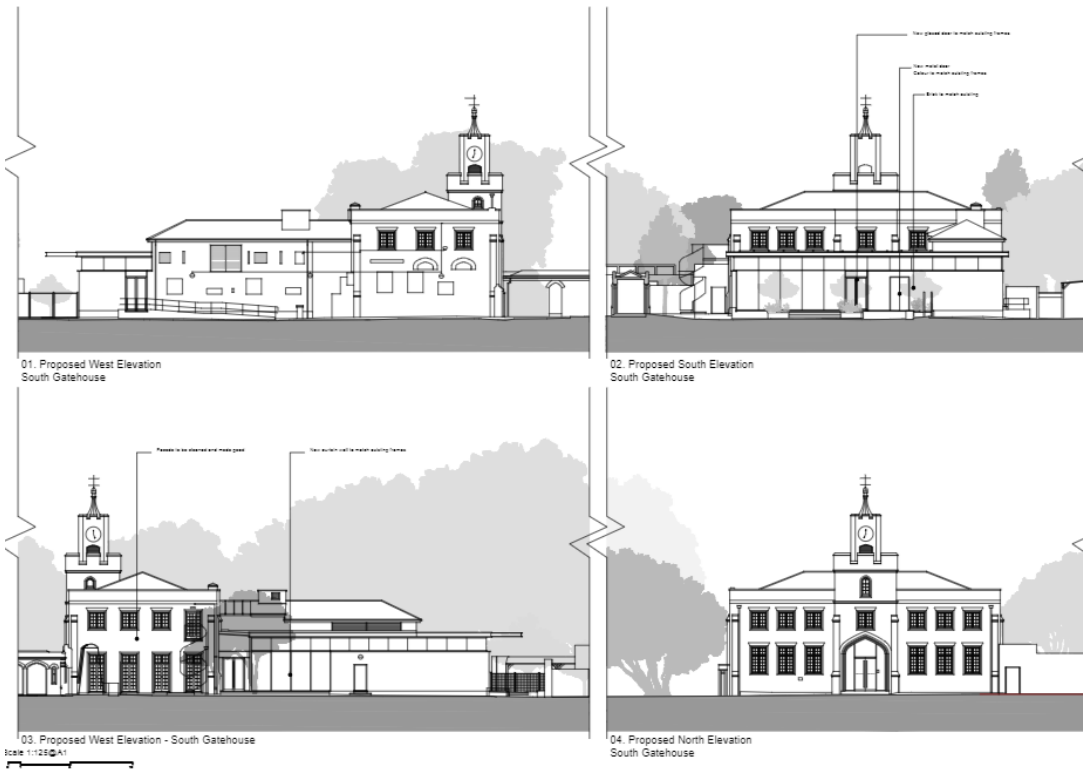
NOTES



03. Proposed West Elevation East Gatehouse
Scale 1:1250



04. Proposed East Elevation East Gatehouse



NOTES

1. All elevations are shown in black and white. Color is to be added in the final presentation.

2. All elevations are shown in perspective.

3. All elevations are shown in elevation.

4. All elevations are shown in elevation.

5. All elevations are shown in elevation.

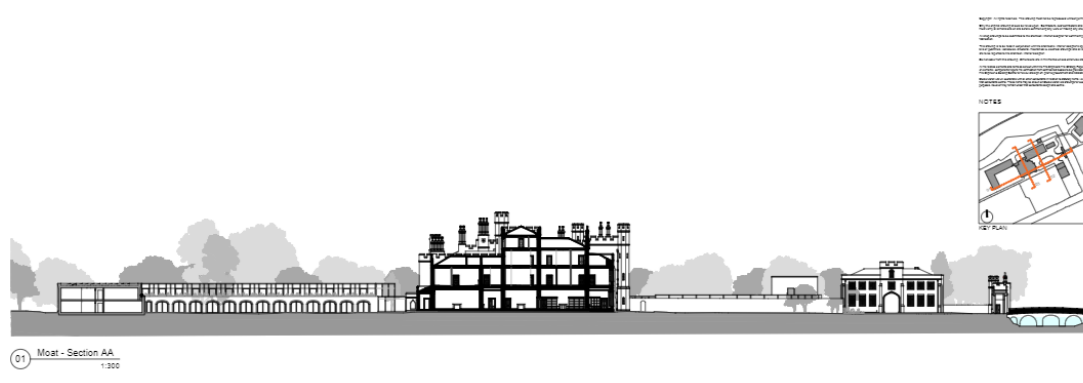
6. All elevations are shown in elevation.

7. All elevations are shown in elevation.

8. All elevations are shown in elevation.

9. All elevations are shown in elevation.

10. All elevations are shown in elevation.



NOTES

1. All sections are shown in black and white. Color is to be added in the final presentation.

2. All sections are shown in perspective.

3. All sections are shown in section.

4. All sections are shown in section.

5. All sections are shown in section.

6. All sections are shown in section.

7. All sections are shown in section.

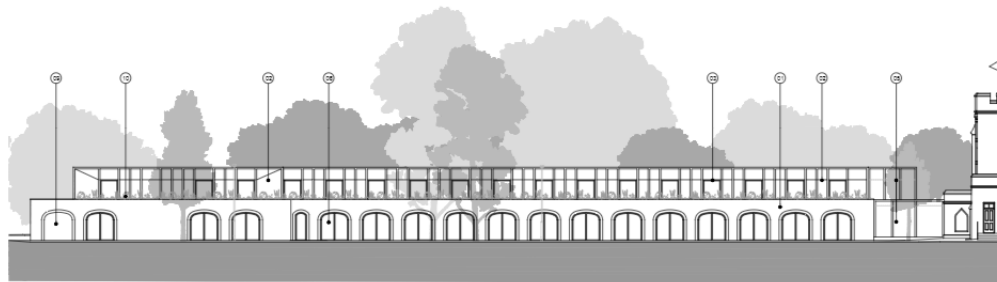
8. All sections are shown in section.

9. All sections are shown in section.

10. All sections are shown in section.



Context Sections - Proposed
Scale 1:300



01. Proposed South Elevation
Courtyard Annex

NOTES

1. See plan

2. See plan

3. See plan

4. See plan

5. See plan

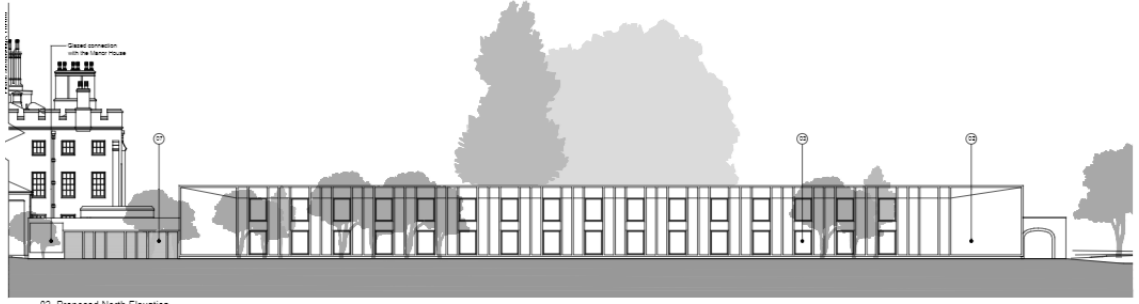
6. See plan

7. See plan

8. See plan

PROPOSED MATERIALS KEY:

- 01 Red brick
- 02 Stone-brick metal casing
- 03 Stone-brick window lintels
- 04 Stone-brick metal sills
- 05 Stone-brick metal frame
- 06 Stone-brick metal frame
- 07 Stone-brick metal frame
- 08 Stone-brick metal frame
- 09 Stone-brick metal frame
- 10 Stone-brick metal frame
- 11 Stone-brick metal frame
- 12 Stone-brick metal frame



02. Proposed North Elevation
Courtyard Annex

Scale: 1:125 @ A1

DATE: 11/12/21

PROJECT: Courtyard Annex

ARCHITECT: [Firm Name]

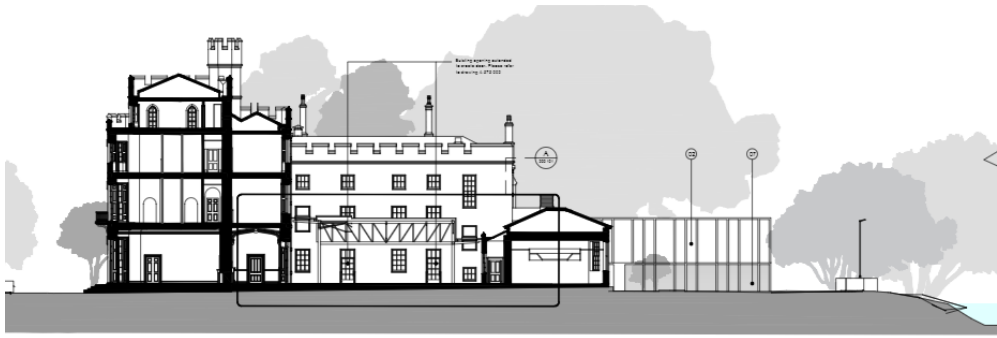
CLIENT: [Client Name]

LOCATION: [Location]

PROJECT NO.: [Project Number]

DATE: 11/12/21

SCALE: 1:125 @ A1



01. Proposed East Elevation
Courtyard Annex

NOTES

1. See plan

2. See plan

3. See plan

4. See plan

5. See plan

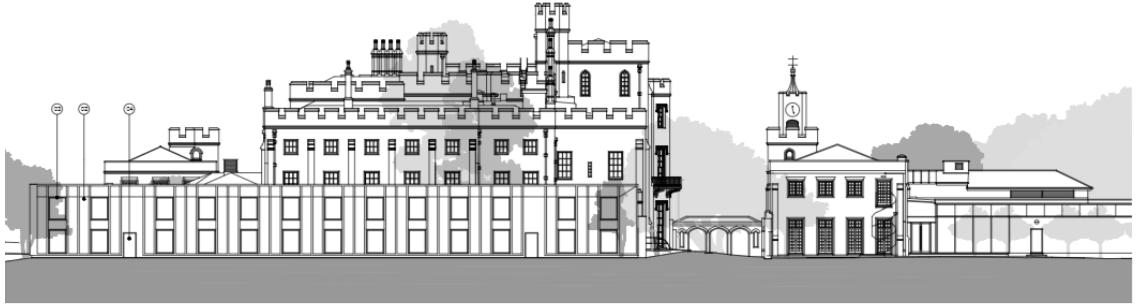
6. See plan

7. See plan

8. See plan

PROPOSED MATERIALS KEY:

- 01 Red brick
- 02 Stone-brick metal casing
- 03 Stone-brick window lintels
- 04 Stone-brick metal sills
- 05 Stone-brick metal frame
- 06 Stone-brick metal frame
- 07 Stone-brick metal frame
- 08 Stone-brick metal frame
- 09 Stone-brick metal frame
- 10 Stone-brick metal frame
- 11 Stone-brick metal frame
- 12 Stone-brick metal frame



02. Proposed West Elevation
Courtyard Annex

Scale: 1:125 @ A1

DATE: 11/12/21

PROJECT: Courtyard Annex

ARCHITECT: [Firm Name]

CLIENT: [Client Name]

LOCATION: [Location]

PROJECT NO.: [Project Number]

DATE: 11/12/21

SCALE: 1:125 @ A1



01. Proposed North Elevation - Manor House

NOTES

1. See notes on drawings for details of materials and finishes.
2. See notes on drawings for details of structural elements.
3. See notes on drawings for details of landscaping and site works.
4. See notes on drawings for details of furniture and fixtures.
5. See notes on drawings for details of lighting and electrical services.
6. See notes on drawings for details of heating and ventilation systems.
7. See notes on drawings for details of drainage and water supply systems.
8. See notes on drawings for details of fire safety and security measures.
9. See notes on drawings for details of accessibility and inclusive design.
10. See notes on drawings for details of sustainability and energy efficiency measures.



02. Existing South Elevation - Manor House

Scale 1:125 @ A1

 MCM ARCHITECTURE 1000 1000 1000 ARCHITECTURE	Project Name Manor House	Client Dillon Park Manor	Architect MCM ARCHITECTURE	Date 11/10/21	Scale 1:125 @ A1	Drawing No. 1101/02	Drawing Title Proposed North & South Elevation Manor House
	Project No. 1000 1000 1000	Site No. 1000 1000 1000	Drawing No. 1101/02	Drawing Title Proposed North & South Elevation Manor House	Date 11/10/21	Scale 1:125 @ A1	Drawing No. 1101/02

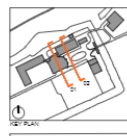
FOR PLANNING 1001 A11/10/21 P1



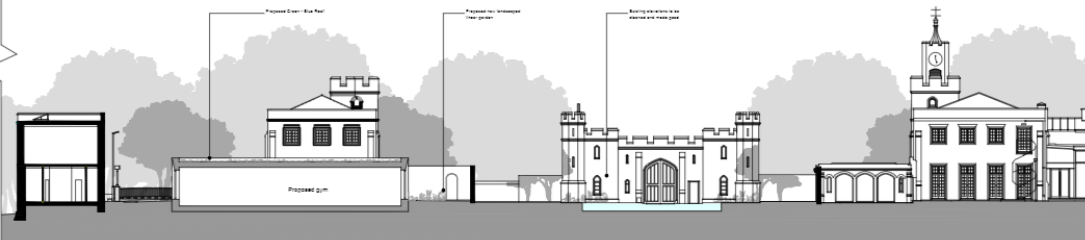
01. Proposed Manor House
Section AA

NOTES

1. See notes on drawings for details of materials and finishes.
2. See notes on drawings for details of structural elements.
3. See notes on drawings for details of landscaping and site works.
4. See notes on drawings for details of furniture and fixtures.
5. See notes on drawings for details of lighting and electrical services.
6. See notes on drawings for details of heating and ventilation systems.
7. See notes on drawings for details of drainage and water supply systems.
8. See notes on drawings for details of fire safety and security measures.
9. See notes on drawings for details of accessibility and inclusive design.
10. See notes on drawings for details of sustainability and energy efficiency measures.



- PROPOSED MATERIALS KEY:
- 01. Red brick
 - 02. Stone-clad masonry
 - 03. Stone-clad masonry
 - 04. Stone-clad masonry
 - 05. Stone-clad masonry
 - 06. Stone-clad masonry
 - 07. Stone-clad masonry
 - 08. Stone-clad masonry
 - 09. Stone-clad masonry
 - 10. Stone-clad masonry
 - 11. Stone-clad masonry
 - 12. Stone-clad masonry
 - 13. Stone-clad masonry
 - 14. Stone-clad masonry
 - 15. Stone-clad masonry
 - 16. Stone-clad masonry
 - 17. Stone-clad masonry
 - 18. Stone-clad masonry
 - 19. Stone-clad masonry
 - 20. Stone-clad masonry
 - 21. Stone-clad masonry
 - 22. Stone-clad masonry
 - 23. Stone-clad masonry
 - 24. Stone-clad masonry
 - 25. Stone-clad masonry
 - 26. Stone-clad masonry
 - 27. Stone-clad masonry
 - 28. Stone-clad masonry
 - 29. Stone-clad masonry
 - 30. Stone-clad masonry
 - 31. Stone-clad masonry
 - 32. Stone-clad masonry
 - 33. Stone-clad masonry
 - 34. Stone-clad masonry
 - 35. Stone-clad masonry
 - 36. Stone-clad masonry
 - 37. Stone-clad masonry
 - 38. Stone-clad masonry
 - 39. Stone-clad masonry
 - 40. Stone-clad masonry
 - 41. Stone-clad masonry
 - 42. Stone-clad masonry
 - 43. Stone-clad masonry
 - 44. Stone-clad masonry
 - 45. Stone-clad masonry
 - 46. Stone-clad masonry
 - 47. Stone-clad masonry
 - 48. Stone-clad masonry
 - 49. Stone-clad masonry
 - 50. Stone-clad masonry
 - 51. Stone-clad masonry
 - 52. Stone-clad masonry
 - 53. Stone-clad masonry
 - 54. Stone-clad masonry
 - 55. Stone-clad masonry
 - 56. Stone-clad masonry
 - 57. Stone-clad masonry
 - 58. Stone-clad masonry
 - 59. Stone-clad masonry
 - 60. Stone-clad masonry
 - 61. Stone-clad masonry
 - 62. Stone-clad masonry
 - 63. Stone-clad masonry
 - 64. Stone-clad masonry
 - 65. Stone-clad masonry
 - 66. Stone-clad masonry
 - 67. Stone-clad masonry
 - 68. Stone-clad masonry
 - 69. Stone-clad masonry
 - 70. Stone-clad masonry
 - 71. Stone-clad masonry
 - 72. Stone-clad masonry
 - 73. Stone-clad masonry
 - 74. Stone-clad masonry
 - 75. Stone-clad masonry
 - 76. Stone-clad masonry
 - 77. Stone-clad masonry
 - 78. Stone-clad masonry
 - 79. Stone-clad masonry
 - 80. Stone-clad masonry
 - 81. Stone-clad masonry
 - 82. Stone-clad masonry
 - 83. Stone-clad masonry
 - 84. Stone-clad masonry
 - 85. Stone-clad masonry
 - 86. Stone-clad masonry
 - 87. Stone-clad masonry
 - 88. Stone-clad masonry
 - 89. Stone-clad masonry
 - 90. Stone-clad masonry
 - 91. Stone-clad masonry
 - 92. Stone-clad masonry
 - 93. Stone-clad masonry
 - 94. Stone-clad masonry
 - 95. Stone-clad masonry
 - 96. Stone-clad masonry
 - 97. Stone-clad masonry
 - 98. Stone-clad masonry
 - 99. Stone-clad masonry
 - 100. Stone-clad masonry



02. Proposed Section BB
1:125 @ A1